

Pro-Shore™, LLC
www.pro-shore.com

Email:
jason@pro-shore.com

Direct sales:
ron@pro-shore.com

Pro-Shore's™ versatile and efficient product lines are designed around contractors' needs. The Pro-Shore™ decking system is the most cost effective solution in today's marketplace.

During the development of our system, Pro-Shore™ combined forces with several leading contractors to gauge their forming needs, while summarily improving labor productivity. Information gathered during this process was vital in designing a simple system that can handle all phases of the contractors forming needs, in a cost effective manner.

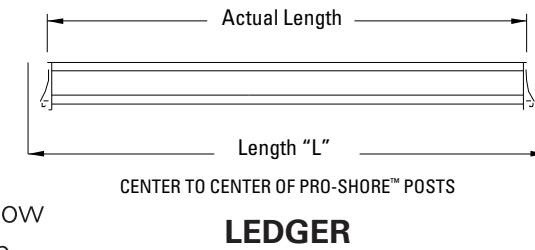
Over 600 buildings have been completed with our system in over 8 different countries.



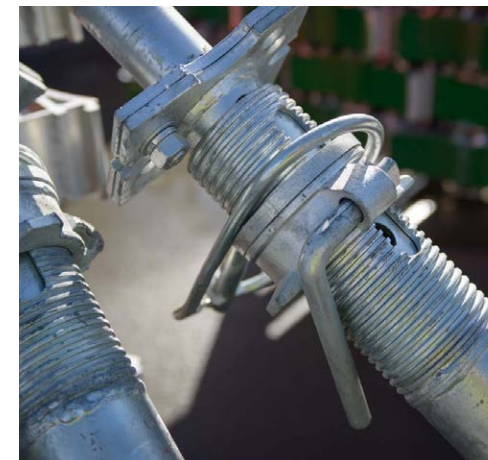
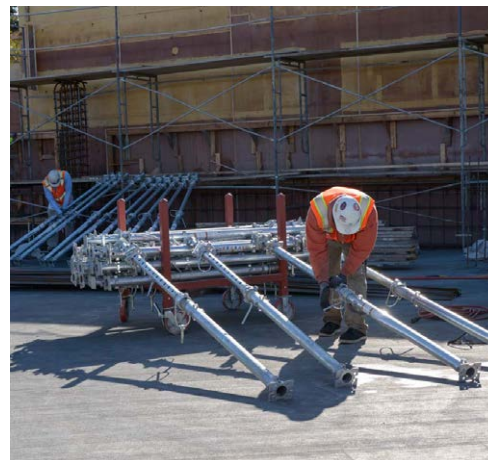
Pro-Shore™ ships all equipment in convenient storage racks and/or wire baskets, which can be moved throughout the jobsite without the use of a crane.

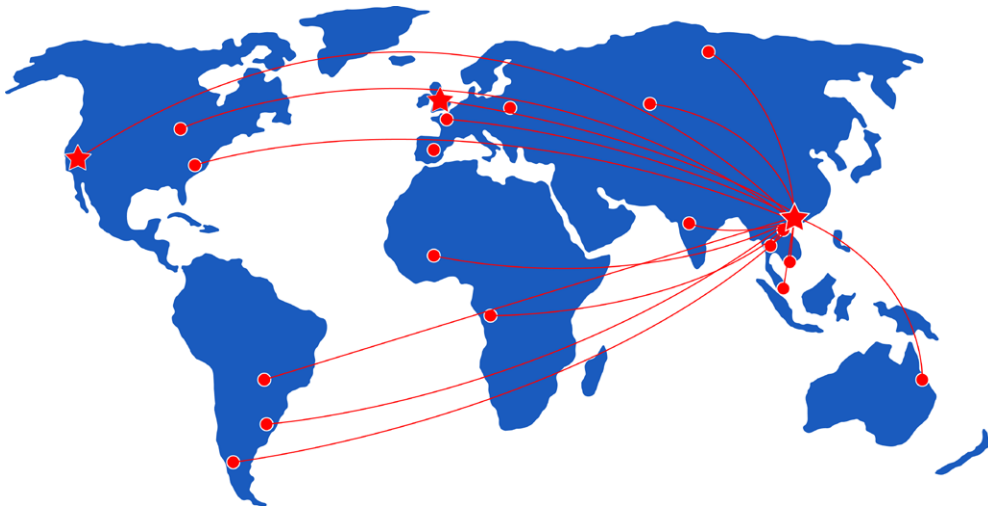
DESCRIPTION	QUANTITY PER RACK	WEIGHT	WEIGHT PER RACK
Primary Post	50	73 lbs.	3733 lbs.
Primary Post w/ Extension	50	88 lbs.	4483 lbs.
#3 Post	50	58 lbs.	2983 lbs.
#4 Post	35	83 lbs.	3083 lbs.
#5 Post	35	88 lbs.	3174 lbs.
#5 Post W/ 5'10 Ext.	35	99 lbs.	3559 lbs.
Concrete Forming Panels	5	355 lbs.	1885 lbs.
Pro-Deck™ Panel 6x3	11	63 lbs.	778 lbs.
Pro-Deck™ Panel 6x2	13	47 lbs.	696 lbs.
Slab Grabber	50	42 lbs.	2183 lbs.
10' Ledgers	33	67 lbs.	2311 lbs.
8' Ledgers	33	54 lbs.	1865 lbs.
6' Ledgers	33	40 lbs.	1320 lbs.
4' LVL Joist	68	15.2 lbs.	1069 lbs.
5' LVL Joist	68	19.2 lbs.	1137 lbs.
6' LVL Joist	68	24.2 lbs.	1341 lbs.
6' Aluminum Joist	50	18 lbs.	983 lbs.

- 6'10" to 21'-0 3/4" single post capability.
- Drophead system allow ledgers and lvl joists to be stripped while leaving reshores in place.
- 70% material recovery 1 (one) day after pouring. It's possible only vertical posts stay in place as reshores.
- Ramps and decks with slopes up to 15% can be shored and safely braced to resist lateral loads.
- 6'0" to 8'0" post grid (48 SF) requires 25% fewer posts than European 2m x 2m (approx. 36 SF) post grids.
- Up to 24" slabs can be supported with standard equipment.
- Fully braced cantilevers allow 4'0" walkways beyond slab edge.
- All parts are color coded to match erection drawings.



- 5,000 to 6,000 SF of equipment can be loaded on a 40' flatbed (results in lower freight costs).
- All posts have jet-locks so steel cross braces can be utilized to stabilize the posts into 4-legged towers for safety during erection of our system.
- No tripods or wood bracing required.
- "Field friendly" detailed delivery list with line item inventory.
- Pro-Shore™ is available directly through us, or through one of our many distributors.





Pro-Shore™, LLC

Email: jason@pro-shore.com

Direct Sales: ron@pro-shore.com

Main Office: 770 Mays Boulevard, Suite 4471
Incline Village, NV 89450
+1.775.413.5071

Hong Kong: 33 Canton Road, Suite 1203, Tower 3
Tsimshatsui, Kowloon, Hong Kong, China
+852.8192.8578

UK: 2 Landsdowne Road, Aldershot, Hants,
GU11, 3ER
+44.20.8123.6861